

## Banaji Silverline Developers LLP

Dilnavaz, Lallubhai Park Road, Opp. Rajpuria Hostel, Andheri (W), Mumbai 400058

<http://www.banaji.com> | [janibanaji@gmail.com](mailto:janibanaji@gmail.com) | +91 9820062495

[banajiassociates](#)

**Site Address:** Aneesh Apartment, Azad Lane, Behind Barista, Off. S.V. Road, Andheri (W), Mumbai – 400058.



MahaRera number: P51800056463 (<https://www.maharera.mahaonline.gov.in>)



Maharera Scan



Brochure Scan

Marketed By:

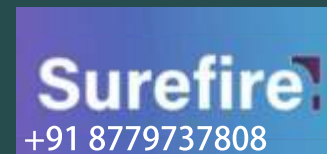


- **Contact:** +91 98335 14938
- **Email :** connect@vijaygwalani.com
- **Agent Registration Number :** A031182400990
- **Website:** www.aneeshsilverline.com

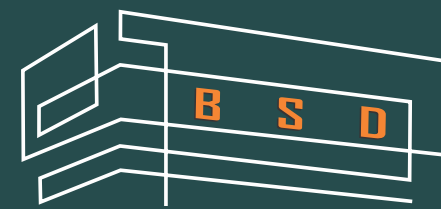
Project  
Financed &  
Approved  
by:



Financial  
Advisory:



**Disclaimer:** All information and contents as contained herein, including but not limited to all designs, layouts, specifications, plans, services, facilities and infrastructure are illustrative and subject to change without notice. The fixtures and furnishing shown are representative and do not form part of the apartment. The brochure is purely conceptual and not a legal offering.



# Aneesh Silverline

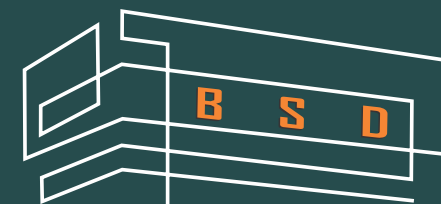
“Embrace the Sublime”

## Garden View Residences





Artist's Impression



# Aneesh Silverline

Welcome to a transformative living experience designed and developed by visionary architects, where the principles of Biophilic design, Vaastu and Sustainability converge in perfect harmony. Step into a world where every element of your home is meticulously planned to enhance your well-being, foster positive energy and contribute to a greener future.

Aneesh Silverline celebrates the beauty of nature within the confines of urban living. Biophilic design principles infuse every space with the tranquility and vitality.

Sublime elegance in our building design and amenities with care and attention to all details crafts out the epitome of harmonious living.



OPULENT ENTRANCE LOBBY



YOGA CORNER



MEDITATION CORNER



LIVING ROOM



GYM

Artist's Impression

# LAYOUT PLAN





## Project Amenities:

- Vastu Consious Planning
- Certified Green Building
- Building Facing Garden
- Rain Water Harvesting & Borewell
- Fully Automated Car Parking
- CCTV Surveillance
- Double Height Opulent Entrance Lounge
- Intercom Facility from Lounge to Apartments
- Two High Speed Elevators
- Yoga & Premium Fitness Room
- Society Office
- Terrace Haven
- Staff Toilet for each floor

### FLAT AMENITIES

- Premium Electrical Switches & Accessories
- Walls finished with premium gysum & paint
- Smart Home Automation
- Double Glazed Windows (DGU)
- Laminate finish flush doors
- Provision for AC

### LIVING & BEDROOM

- Marble flooring in Living & Dining
- Vitrified Flooring in Bedrooms
- Provision for wifi, TV
- Balcony with glass railing

### KITCHEN

- Modular Cabinets & Drawers
- Provision for Exhaust Fans, Water Purifier, Chimney
- Counter of Polished Vitrified Slabs
- Premium Quartz Composite Sink

### BATHROOM

- Branded CP Fixtures , Fittings & Accessories
- Double Charged Vitrified Tiles on walls
- Anti Skid Tile Flooring
- Premium Geyser & Exhaust Fan

# 5TH TO 8TH FLOOR PLAN



BEDROOM



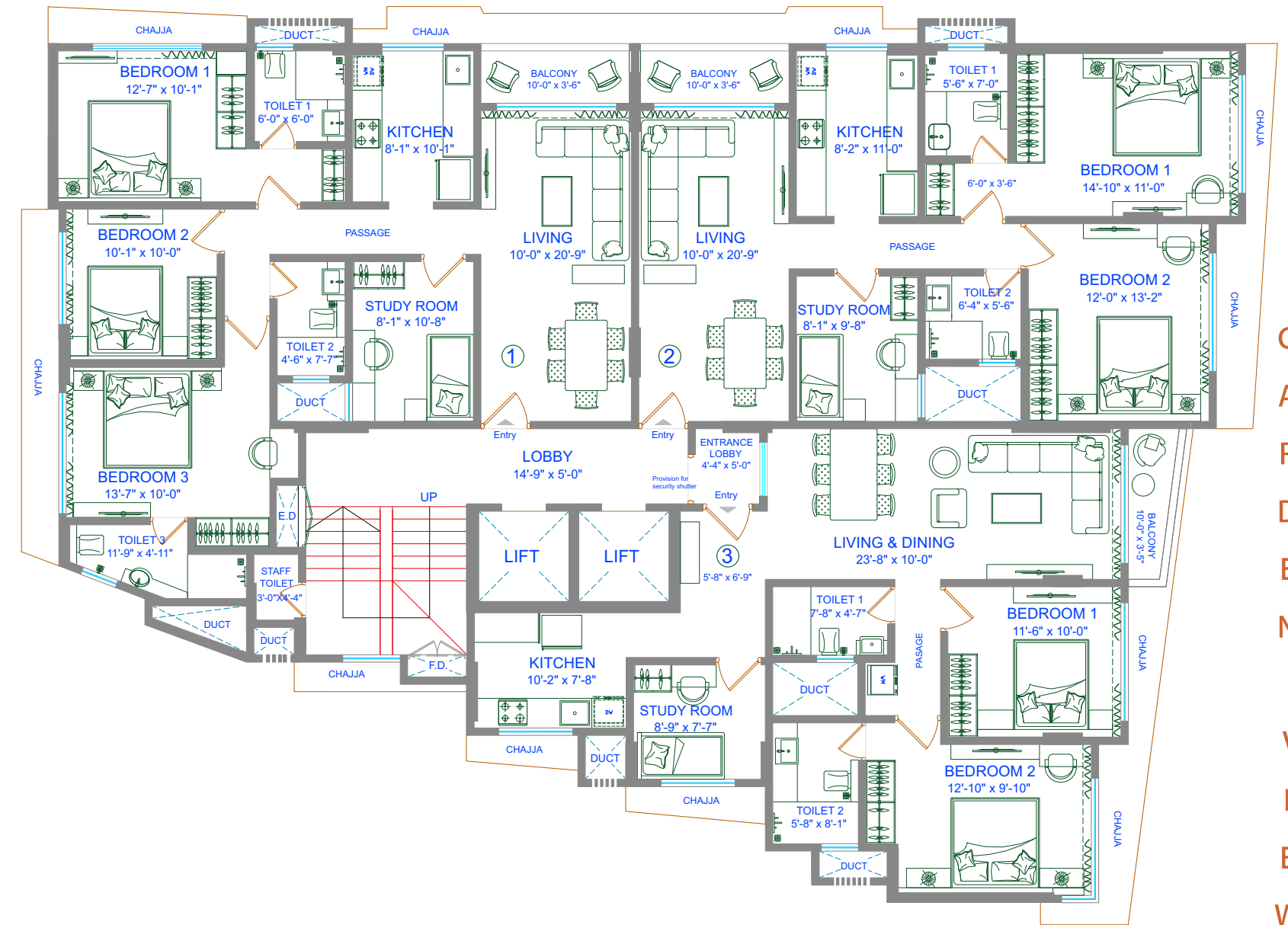
KITCHEN



BATHROOM

Artist's Impression

Spacious & Uncluttered; Your home embraces a tangible sense of freedom with just 3 residences per floor;  
Your home at Aneesh Silverline is a sublime showcase of peace, privacy & exclusivity.  
Tranquility that is blessed with abundant greenery.



- ① 3.5 BHK - 1072 sqft total area
- ② 2.5 BHK - 928 sqft total area
- ③ 2.5 BHK - 928 sqft total area



GARDEN VIEW



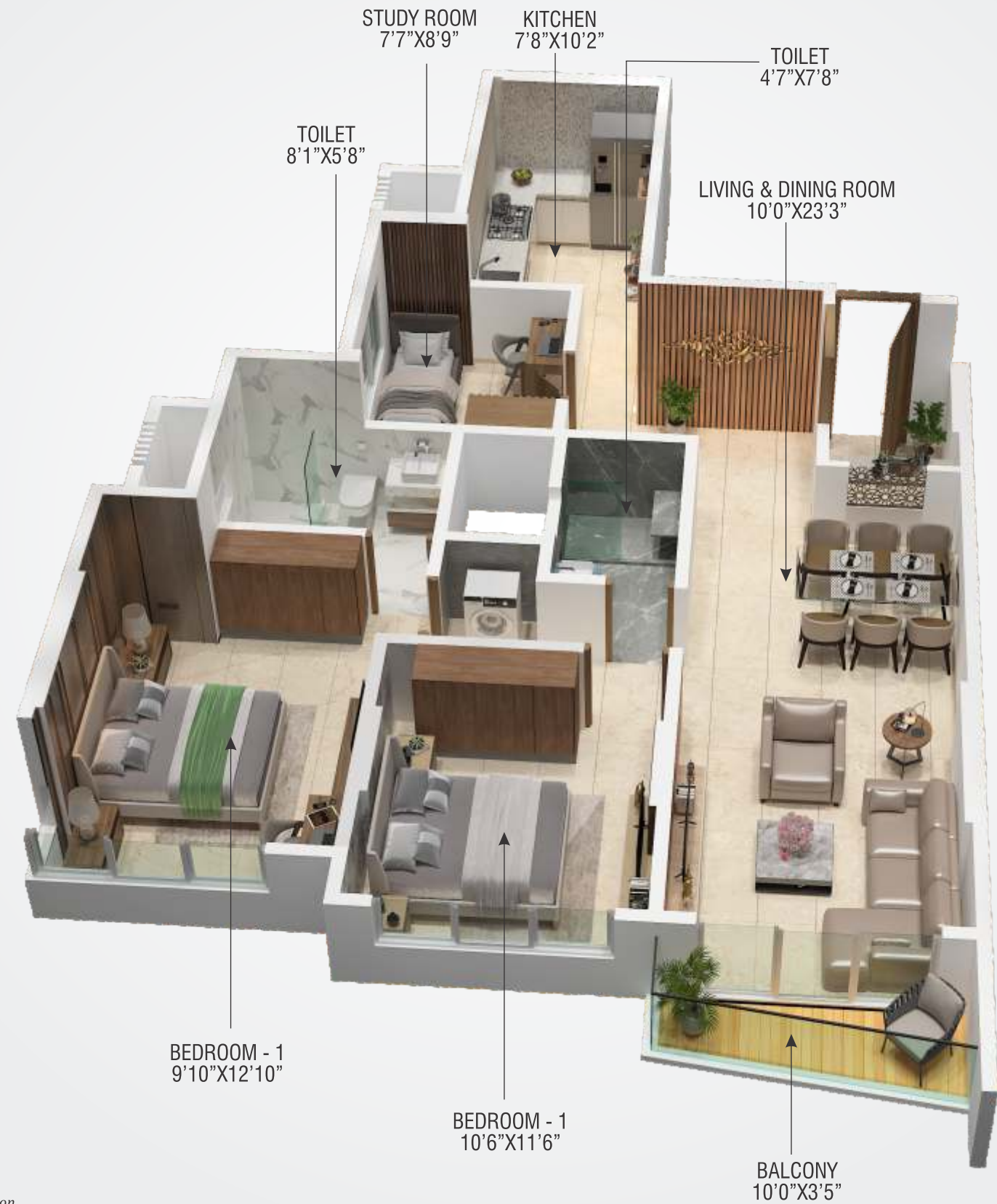
# 2.5 BHK | Dimension to visualization



# 2.5 BHK

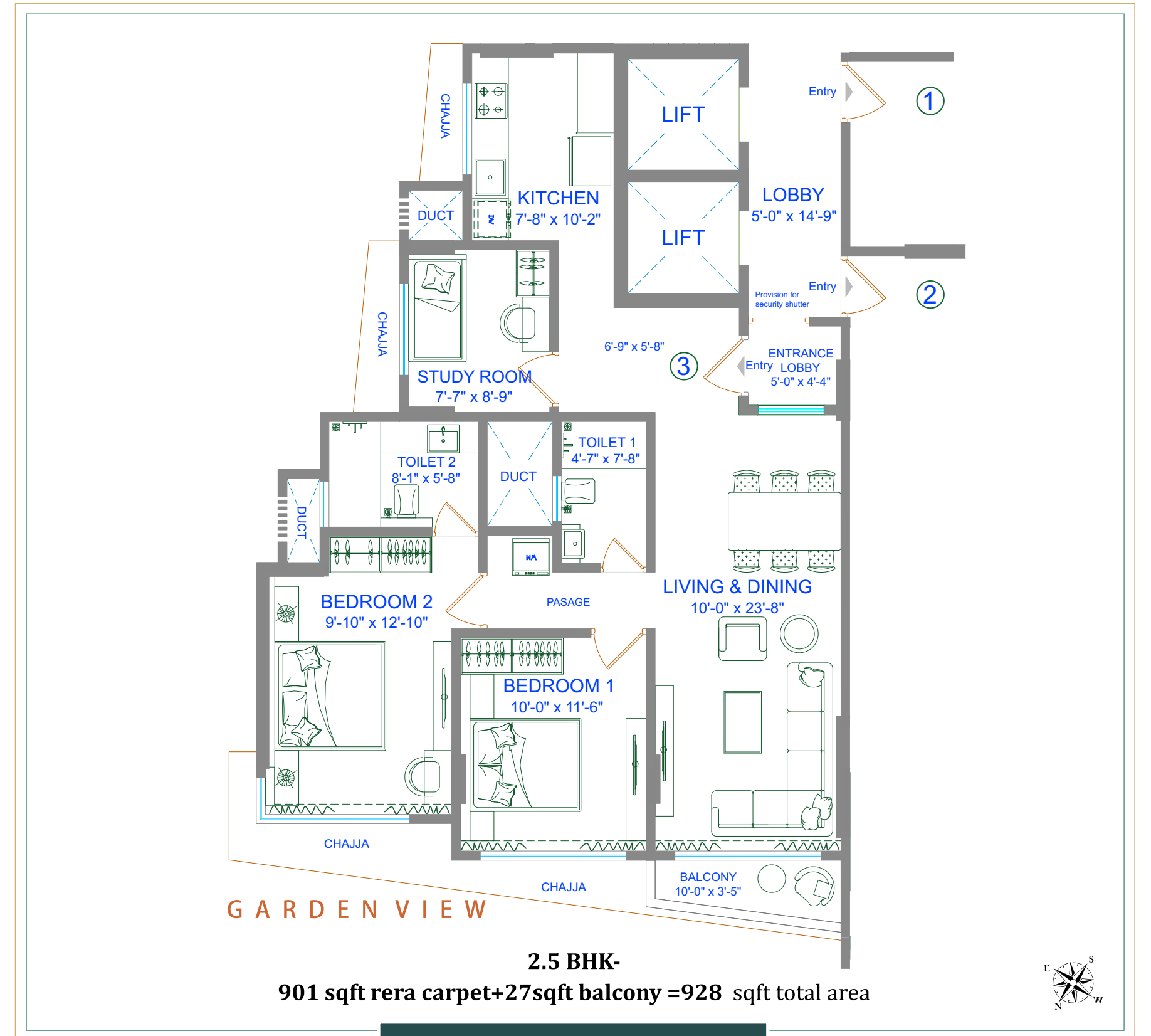


2.5 BHK | Experience lines to lifestyle

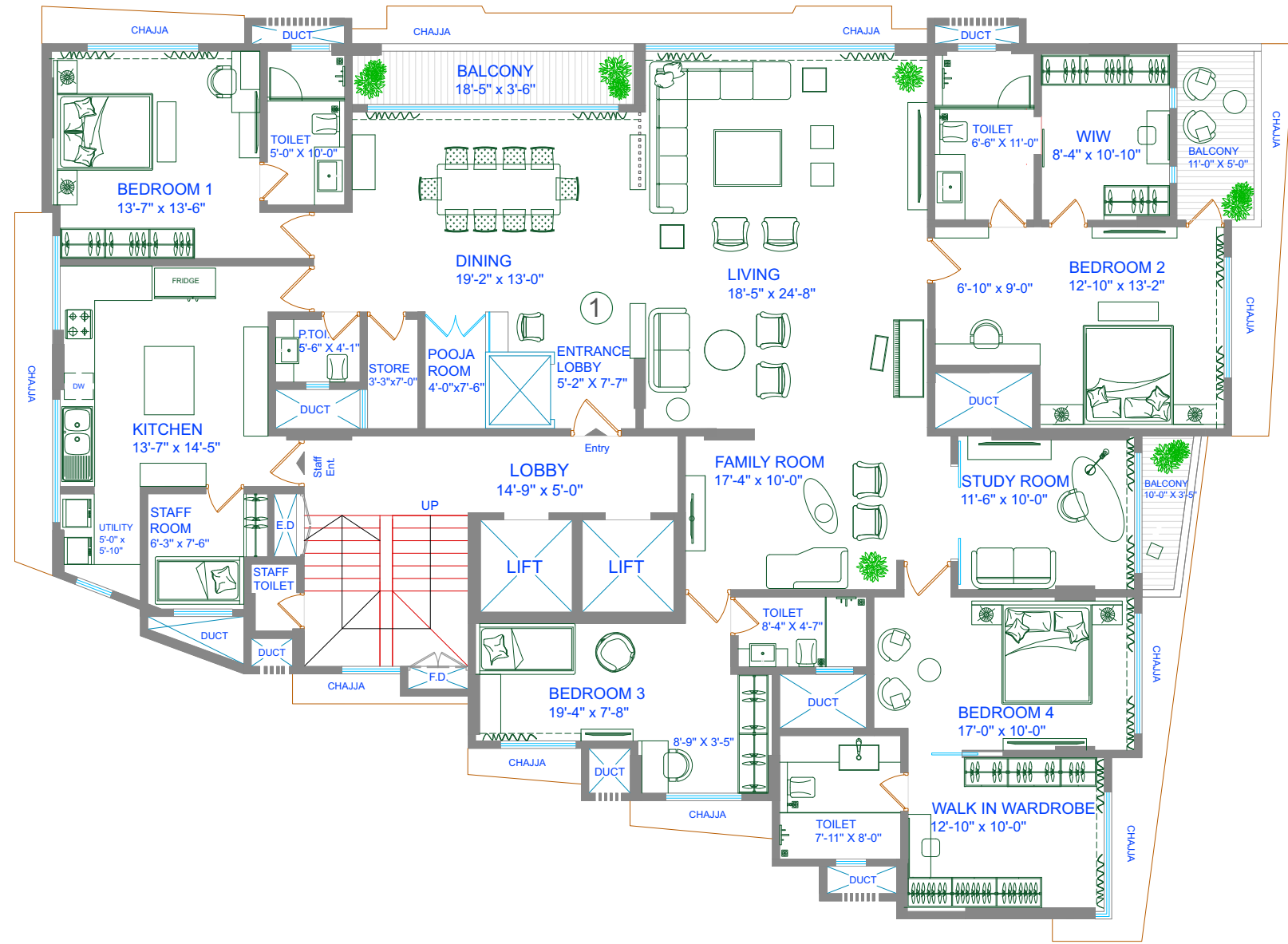


Artist's Impression

2.5 BHK



# PENTHOUSE



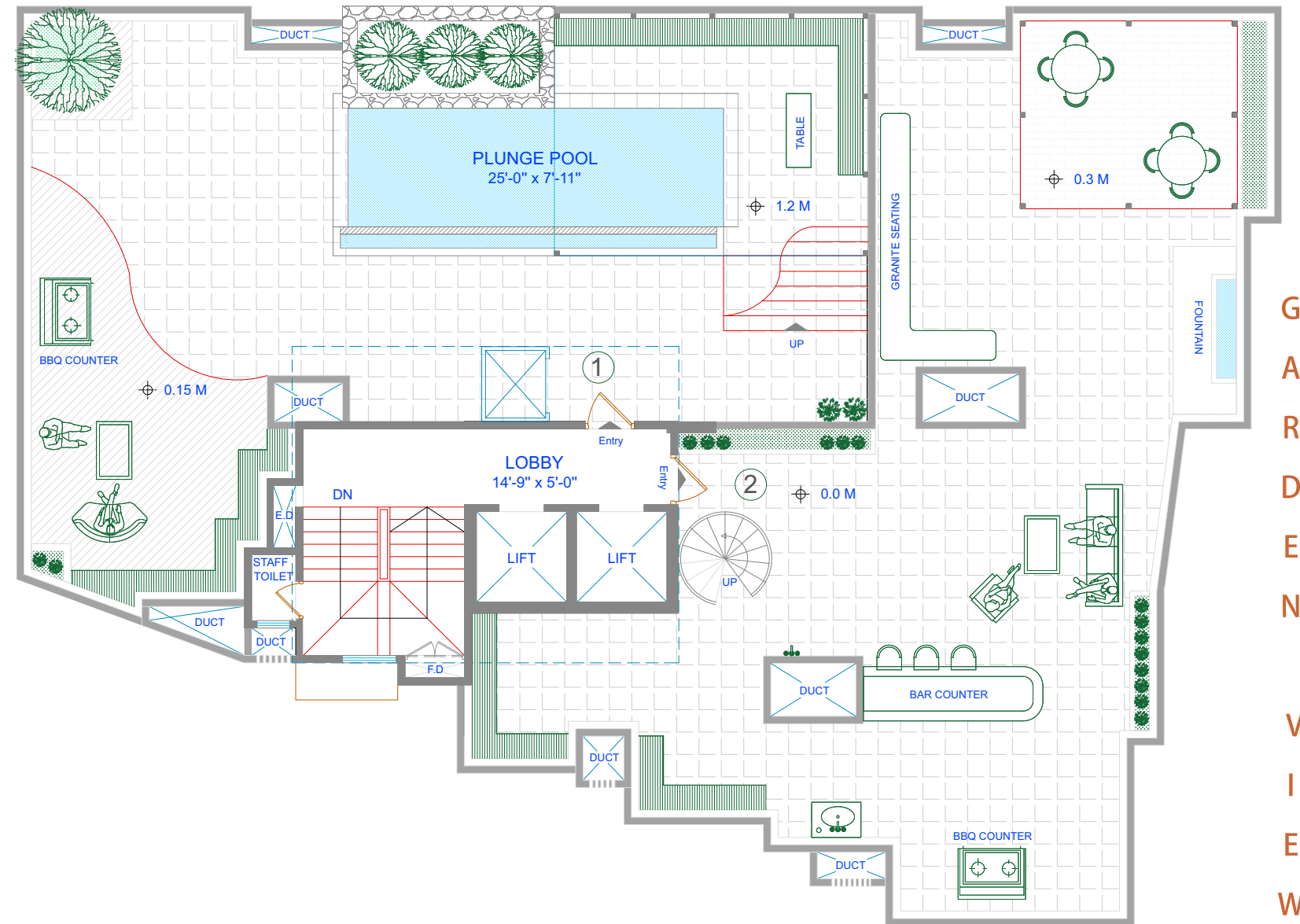
GARDEN VIEW

2833 sqft rera carpet area + 119 sqft balcony carpet area = 2952 sqft total area

Artist's Impression



# SKY GARDEN RETREAT



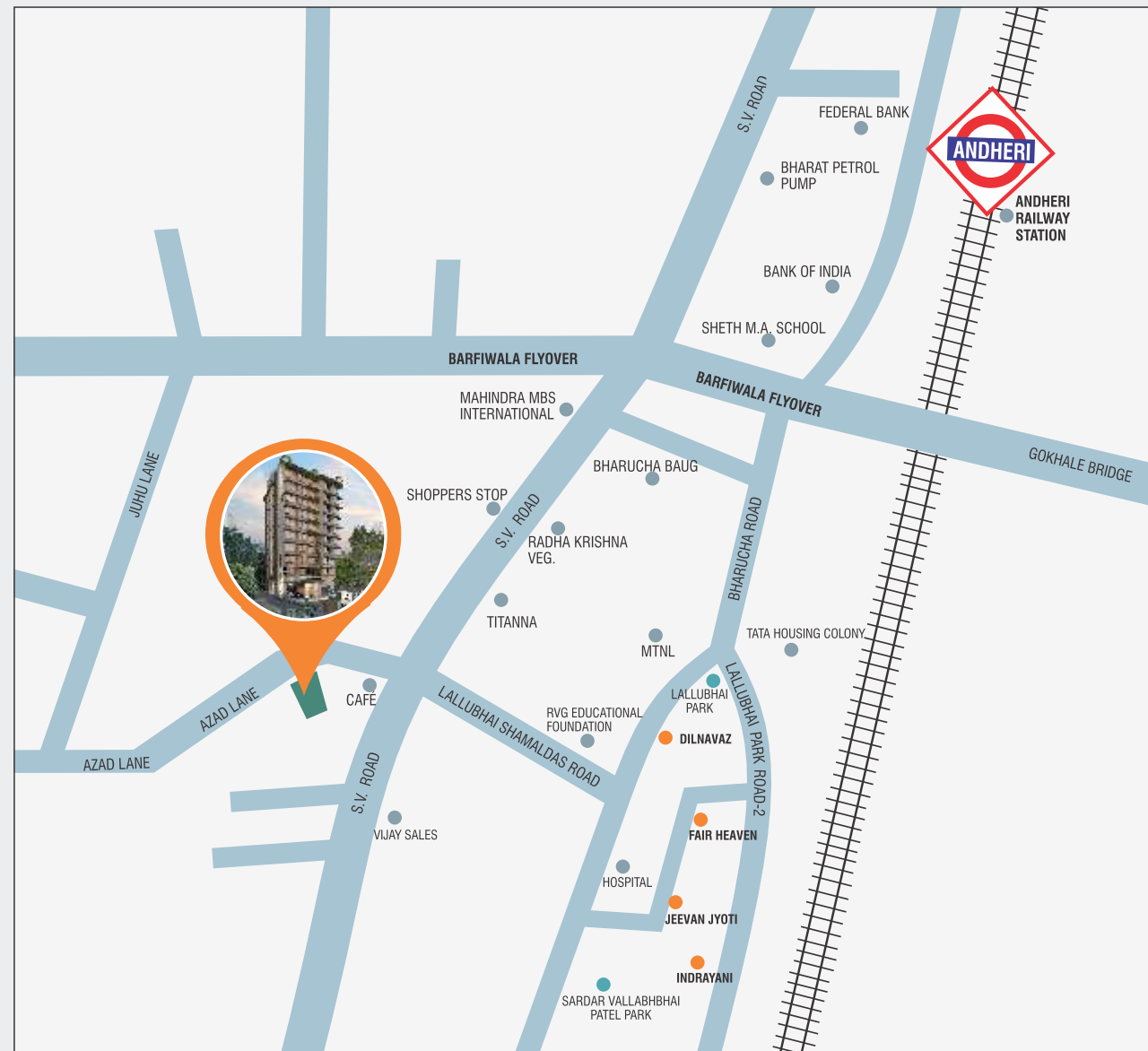
GARDEN VIEW

- 1) Private Terrace - 1680 sqft total area
- 2) Society Terrace - 1705 sqft total area

Artist's Impression

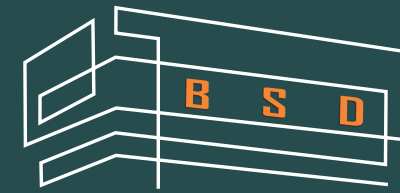


## PROJECT LOCATION & CONNECTIVITY



<ul style="list-style-type: none"> <li>• Mukesh Patel School of Technology -3 min</li> <li>• NMIMS -10 min</li> </ul>	<ul style="list-style-type: none"> <li>• Andheri Railway Station -5 min</li> <li>• Andheri Metro Station -5 min</li> </ul>
<ul style="list-style-type: none"> <li>• Domestic Airport -15 min</li> <li>• International Airport -15 min</li> </ul>	<ul style="list-style-type: none"> <li>• Radha Krishna Veg -2 min</li> <li>• Coffee Shop -1 min</li> </ul>
<ul style="list-style-type: none"> <li>• Advanced Multispeciality Hospital -15 min</li> <li>• Criticare -5 min</li> </ul>	<ul style="list-style-type: none"> <li>• Shoppers Stop -2 min</li> </ul>

● Successfully completed projects in the vicinity



## Banaji Silverline Developers LLP

Banaji Silverline Developers LLP is a distinguished real estate development company built on a 65-year legacy of care and integrity. These values define our philosophy and commitment to creating exceptional living spaces.

Our focus on sustainability, architectural innovation and client satisfaction, ensures that every project reflects superior craftsmanship, thoughtful design, and uncompromising quality.

## Successfully Completed Projects

- **Dilnavaz**, Lallubhai Park, Andheri (W), Mumbai
- **Tarangan**, 7<sup>th</sup> Road, JVPD Scheme, Mumbai
- **Jeevan Jyoti**, Lallubhai Park, Andheri (W), Mumbai
- **Fair Heaven**, Lallubhai Park, Andheri (W), Mumbai
- **Indrayani**, Lallubhai Park, Andheri (W), Mumbai
- **Safalya**, Tarun Bharat Society, Chakala, Andheri (E), Mumbai



Jeevan Jyoti, Lallubhai Park, Andheri West, Mumbai.



Tarangan, 7th Road, JVPD Scheme, Mumbai



Dilnavaz, Lallubhai Park, Andheri West, Mumbai